



**Homogeneous Sheet Flooring
Presentation**

14 09 19

Introduction to BOMEI

BOMEI is the brand of the International Sales Division of a large industrial corporation based in Shanghai that designs, manufactures and sells Commercial flooring. This factory is the both the largest and fastest growing Chinese producer of Homogeneous vinyl flooring and has the capacity to make more than 1,000,000 m² of homogeneous flooring every month.

Within China we have a substantial sales network covering all major and medium-sized cities, to support contractors, installers and end users. We have extensive experience of supplying flooring to major projects throughout China. Bomei has its head office at the factory premises in Shanghai with a further six customer service offices throughout China.

Introduction to BOMEI



Bomei's Commitment:

We understand our responsibility as a major supplier of Commercial flooring and pay close attention to product quality and a prompt and attentive service to our customers.

We wish to develop and maintain a long term mutually beneficial trading relationship and become known as a reliable supplier of a wide range of consistently good quality Vinyl flooring products.

Bomei's Target:

we are now actively developing our international business.

We are looking for distributors to share in our on going growth in a long term partnership.

Why work with us!

Extensive experience in the Chinese Market
Modern Manufacturing machinery
Expertise from Europe in setting up the lines
Pure PVC
Attention to detail
Focus on quality
Focus on packaging
Good lead times
Competitive price
Long term partnership
Your brand!!

Factory production line photo



Bomei's range of Homogeneous vinyl sheet produced on a modern line with the input of manufacturing experts from Europe has a diverse range of colours and designs to provide an attractive durable floor.

Factory production line photo



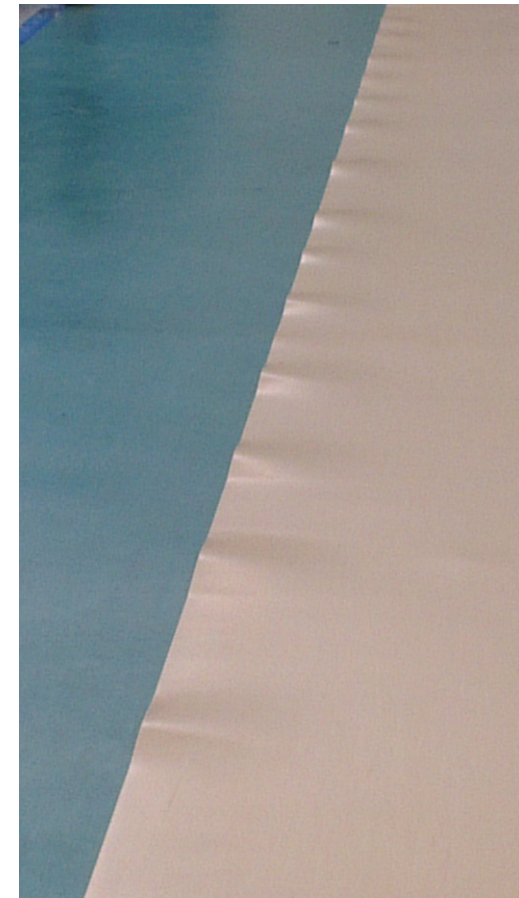
Treating the floor with a special PUR treatment not only improves the wear resistance of the floor but also helps reduce bacteria and the passage of infection. The helps promote a fresh healthy environment.

Quality Control

Being in the vinyl sheet flooring business for decades, we have seen plenty of problems of vinyl flooring of our own and other famous brands, which are caused by poor producing technology and improper packaging.

Problems occurred

Edge Rucking / Elephant Foot



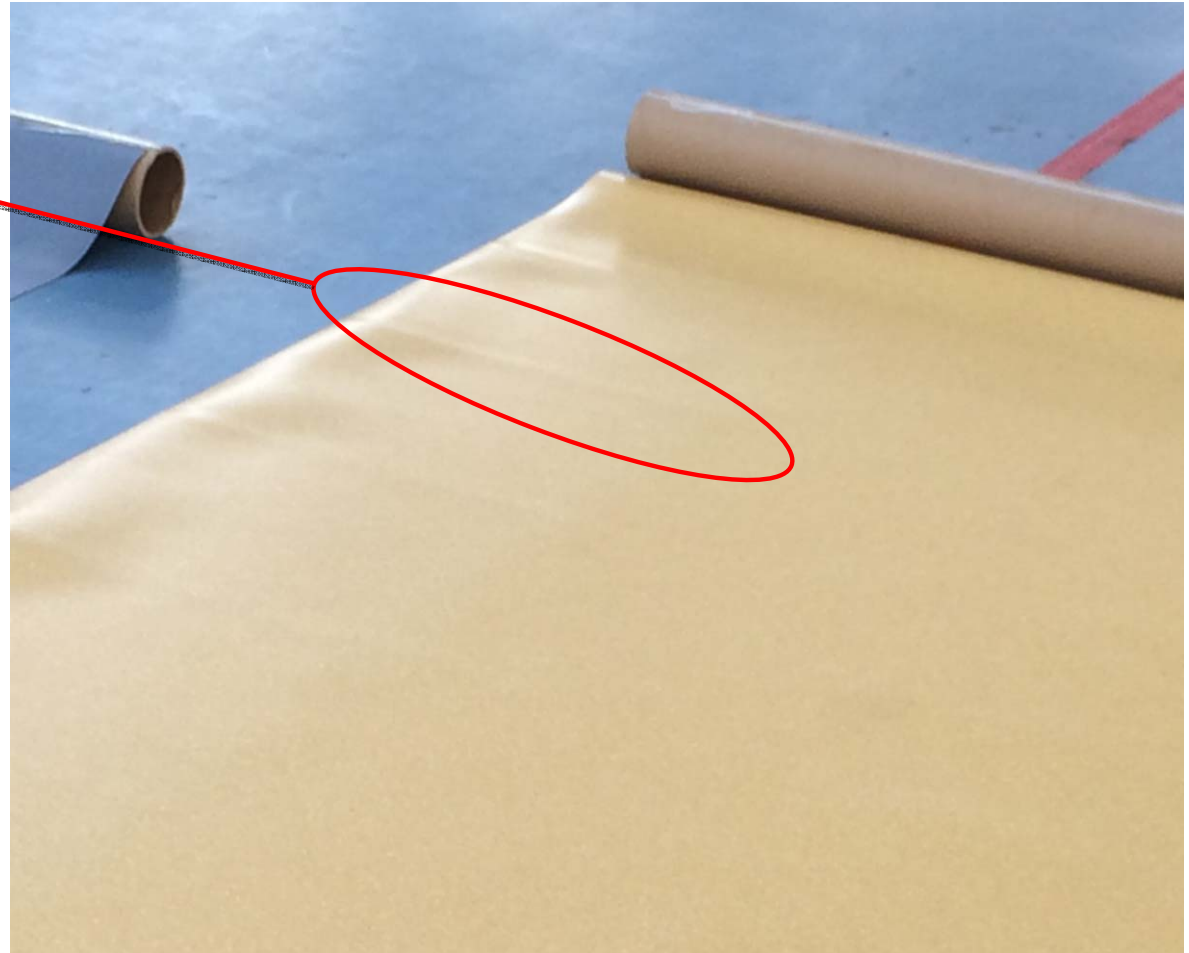
Problems occurred

Regular Ripples/ bubbling



Problems occurred

Bar marks near to
the core end.



Problems occurred

Collapsed Pallets



Quality Control

As a manufacturing unit, our focus has been on improving the overall quality of the product and its process, **we select the most proper products formula and employed the exports from Europe to optimize our production line**, so that the material leaving the production line is at its optimum.

We fully understand that this material when exported overseas must be carefully packaged to ensure that it incurs no damage during transportation.

While in transit the material will be exposed to extremes of temperature and humidity. **So we use the reliable packaging to make sure your orders arrive “on time in better shape”.**

Quality Checking

Focus on quality through the manufacturing process

1. Consistent pattern, colour and surface finish against the samples (marbling/flashing consistent)
2. Length/ Width/ Thickness
20m/2m/2mm

Roll packing



Pallet Packaging

Protection in four corners. ←




Groove to stabilize the belts;
Cushion to protect belts from friction.



Heavy duty plastic pallet



Roll Packing



Bomei Florida
Homogeneous Sheet Flooring

CUSTOMER PURCHASE ORDER NUMBER PONZ-012127

PRODUCT CODE _____ COLOUR _____

LENGTH (M) 20 WIDTH (M) 2 GAUGE (MM) 2

WEIGHT (KG) _____ BATCH NUMBER _____ ROLL NUMBER _____

Our Customer's information

Outside of each roll, there is the roll label to clearly show the specification of the product.

Pallet Packing

Pallets waiting for loading





Pallet Label

PALLET NO 01



CUSTOMER PURCHASE ORDER NO:PONZ-012127

PRODUCT CODE	NAME	BATCH NUMBER	ROLL NUMBER	GROSSWT IN KGS	NETWT IN KGS	SQM
TOTAL (16 ROLLS)				0.00	0.00	640.00

PALLET WEIGHT (KG)	25.00
GROSS WEIGHT WITH PALLET (KG)	

Container Loading



Container Loading



Airbags to protect the flooring in container.



To Your Warehouse



Sufficient Stock



We hold abundant stocks of Homogenous flooring to significantly reduce lead times and improve the overall service to our customers

Commercial documents

Recording of the process with photographs and documentation that will be sent to the customer before it arrives at their warehouse.

Test Certificates

Show the tests we have done

-Kindly check the attached pdf file of 14 09 18 Bomei EN&ASTM
Testing Database

Installation & Maintenance

Installation

The installation should be carried out in accordance with local standards. The sub-floor to be smooth, hard, clean and dry prior to laying. Where applicable the sub-floor must incorporate an effective damp proof membrane. The material must be allowed to acclimatize 24 hours before installation and the room temperature needs to be between 18-24oC.

Maintenance

The maintenance should be carried out regularly to retain the appearance and durability of the floor. The flooring covering should be maintained with regular sweeping and damp mopping using a neutral cleanser. More intense cleaning should be carried out using a fine spray cleaning pad under a floor machine, or for larger areas combined machine cleaning.



Packing Information

Bomei Florida Series(Directional Homogeneous Vinyl Sheet with PUR Protection):3.15kg/m²,130kg/ Roll, Packaging:16 Rolls/ Pallet,10 pallets / 20ft Container,6400sqm / 20ft Container

Bomei Arizona Series(Non - Directional Homogeneous Vinyl Sheet with PUR Protection):2.85kg/m²,120kg/ Roll,Packaging :16 Rolls/ Pallet,10 pallets / 20ft Container,6400sqm / 20ft Container

Bomei Carolina Series(Non - Directional Homogeneous Vinyl Sheet with PUR Protection):2.85kg/m²,120kg/ Roll,Packaging :16 Rolls/ Pallet,10 pallets / 20ft Container,6400sqm / 20ft Container

Project Reference



Shopping mall in Shenzhen China (6,000 Sq.m)



Bookstore in Luohu District(5000sqm)



Project Reference



Arts center in East China



Shenzhen Library (20,000 sq.m)



Macao university (230,000 sq.m)



The End